


The logo for BUDDIES, featuring the word in a bold, white, sans-serif font. Above the word is a white arc, and below it is an orange arc, resembling a smile.

BUDDIES

TURNING DISC, BUILDING TRUST

FOLLOWING GERMAN QUALITY SINCE 1952



ABOUT US

WHO ARE WE

We are a premier German abrasive enterprise subsidiary, operating three state-of-the-art factories across 50,000 square meters, dedicated to delivering superior products with excellent logistical connectivity.

WHAT DO WE HAVE

Our team consists of expert production staff, innovative R&D engineers, and a proactive marketing team. Using advanced technology and genuine German manufacturing techniques, we provide superior abrasive solutions.

WHAT ARE WE DOING

Committed to quality, reputation, and client satisfaction, we offer advanced grinding solutions, expert technical guidance, and extensive after-sales support. Our goal is to consistently surpass customer expectations.

WHY DO WE DO THIS

Guided by 70 years of manufacturing excellence, we are driven by commitment, innovation, and foresight. We lead the industry while setting the highest standards in quality and service.



Explanation of Designation

Symbol	1 Type	2 Abrasive Kind	3 Grain Size	4 Grade	5 Organize Denisty No.	6 Bond	7 Reinforced	8 Max.speed
Example	42	A	36	P	9	B	F	RPM6650
	41 (Flat) 42 (Recessed) 27 (Recessed)	A (Standard Aluminium Oxide) WA (White Aluminium Oxide) C (Silicon carbide) ZA (Zirconia) CA (Ceramic abrasive)	Coarse 12 14 16 60 20 70 24 80 30 90 30 100 46 120 54 150 fine	F (Soft) G (Soft 1) H (Soft 2) J (Soft 3) K (Medium Soft 1) L (Medium Soft 2) 9 M (Medium 1) N (Medium 2) P (Medium hard 1) Q (Medium hard 2) R (Medium hard 3) S (Hard 1) T (Hard 2)	4 5 6 7 8 9 10	V (Vitrified) B (Resin) R (Rubber)	F (Import double net) F+ (Import triple net)	60m/s 70m/s 80m/s

Construction

Metal ring with mark of producing quarter Placed in the middle, firmly install on the machine

Paper label
Each wheel with all product and security warning and other information of the product

Glass fiber fabric
Solid high quality fabric, used for improving security of cutting process

Glass fiber fabric
Second layer meshes make it safer and more stable



Mixture Abrasive Grain
Choosing the right abrasive grain or a blend of grains is crucial, tailored to the material being cut

Active Grinding Fillers: Rhodius cutting discs feature premium-grade grains alongside specialized additives that enhance cutting efficiency

Bonding: The perfect bonding of abrasive grains is essential for maximizing cost-effectiveness and ensuring superior cutting and grinding outcomes, aligned with machine capabilities."

Quality system

- 1.IND Grade - "Premium Abrasives for Industry Experts"
- 2.PRO Grade - "Professional Abrasives for Specialized Applications"
- 3.EXP Grade - "Value-Focused Abrasives for Economical Choices"



Action Line

Action tools, our special brand, meticulously crafted for specialized tasks. Like elite commandos on the battlefield, Action products are engineered to excel in a multitude of operations, simplifying tasks and saving precious time for workers. With Action, complexity becomes simplicity, and challenges transform into opportunities for efficiency and success. Choose Action for unparalleled performance and unleash the power of precision in your work.

CUTTING DISCS

ULTRA-THIN CUTTING DISCS



Ultra-thin cutting discs, special for precision and efficiency in metalworking. These discs offer exceptional cutting performance with their ultra-thin design, ensuring smooth and precise cuts in various metals. Designed for enhanced maneuverability and reduced material wastage, they are ideal for intricate cutting tasks. Whether working with thin sheets or intricate components, our ultra-thin discs deliver unmatched precision and reliability for optimal results.

ACTION LINE



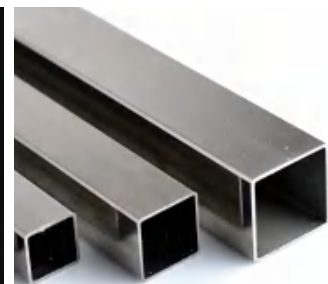
Material:

- High-alloy steels
- High-strength steels
- High-strength sheet metal
- Rust- and acid-proofed steels
- Plastic-coated sheet metal
- Painted sheet metal

Standard Applications:

- Thin-walled sheet metal
- Thin-walled tubes
- Threaded rods
- Cable ducts
- Corrugated sheets
- Trapezoidal profiles

D x T x H MM	INCH	RPM	PCS/CTN	G.W./CTN	L x W x H CM
115*0.6*22.23	4-1/2"*.024*7/8"	13300	500	11	44*25*12
115*0.8*22.23	4-1/2"*.032*7/8"	12250	500	12	44*25*12
125*0.6*22.23	5"*.024*7/8"	12250	600	14	26*24*24
125*0.8*22.23	5"*.032*7/8"	12250	600	15	26*24*24





SLIMLINE CUTTING DISCS



▲ Slimline cutting discs, designed for precision cutting in tight spaces. With their compact profile, these discs offer exceptional maneuverability and access to hard-to-reach areas, making them ideal for intricate cutting tasks. Despite their slim design, they deliver impressive cutting performance, ensuring smooth and precise cuts in various materials.



ACTION LINE



Material:

- High-alloy steels
- High-strength steels
- High-strength sheet
- Rust- and acid-proofed steels
- Plastic-coated sheet metal
- Painted sheet metal

Standard Applications:

- Circuit board
- Metal wires
- Thin-walled tubes
- Connectors
- Heat sinks
- Sockets & Switches

D x T x H MM	INCH	RPM	PCS/CTN	G.W./CTN	L x W x H CM
50*1.0*6.0	2"*3/64"*1/4"	30600	1000	5	34*22*22
50*2.0*6.0	2"*5/64"*1/4"	30600	1000	9	44*24*13
65*1.0*6.0	2-1/2"*.024*1/4"	23500	1000	7	60*14*16
65*2.0*6.0	2-1/2"*.032*1/4"	23500	1000	11	60*14*16
75*1.0*6.0	3"*3/64"*1/4"	20100	1000	9	65*16*17
75*2.0*6.0	3"*5/64"*1/4"	20100	1000	18	65*16*17
75*2*9.5	3"*5/64"*3/8"	20100	1000	18	65*16*17



DUAL-PURPOSE CUTTING & GRINDING DISCS



Dual-purpose cutting & grinding disc is our revolutionary discs - a versatile solution designed for both cutting & grinding tasks. Offers safety and time efficiency, eliminating the need for manual product switching during operations. Experience seamless functionality, enhanced safety, and unparalleled convenience with our innovative resin grinding disc.

ACTION LINE



Material:

- High tensile metal sheets
- Hardened, high-alloy and high-strength
- Tool steels
- Structural steels
- Galvanised parts
- Painted metal sheets

Standard Applications:

- Cutting & grinding 2 in 1
- Burr removing
- Solid materials
- Thin sheets, tubes and sections
- Plastic-coated metal sheets
- Structural steel mats

D x T x H MM	INCH	RPM	PCS/CTN	G.W. kg/CTN	L x W x H cm
115*1.9*22.23	4-1/2"*1/12"*7/8"	13300	200	11	26*24*13
125*1.9*22.23	5"*1/12"*7/8"	12250	200	12	26*26*13
150*1.9*22.23	6"*1/12"*7/8"	10200	200	16	33*36*16
180*1.9*22.23	7"*1/12"*87/8"	8500	200	23	38*25*19
230*1.9*22.23	9"*1/12"*7/8"	6650	100	19	26*24*24



NON-FERROUS CUTTING DISCS



Non-ferrous cutting solution: tackling the toughest of aluminum with ease. Unlike traditional methods, our product's special formulation ensures effortless cutting, even through the stickiest of aluminum materials. Experience unparalleled efficiency and precision with our advanced formula, designed to streamline your operations and maximize productivity. Unlock the potential of aluminum cutting like never before with our innovative solution



ACTION LINE



Material:

- Aluminum alloys
- Copper alloys
- Nickel alloys
- Zinc alloys
- Titanium alloys
- Magnesium alloys

Standard Applications:

- Aerospace and aviation
- Automotive manufacturing
- Electronics industry
- Chemical processing
- Medical equipment manufacturing
- Oil and gas extraction

D x T x H MM	INCH	RPM	PCS/CTN	G.W. kg/CTN	L x W x H cm
115*1.0*22.23	4-1/2"*3/64"*7/8"	13300	500	15	44*25*13
115*1.6*22.23	4-1/2"*1/16"*7/8"	13300	500	19	30*24*24
125*1.0*22.23	5"*3/64"*7/8"	12250	600	19	50*26.5*16
125*1.6*22.23	5"*1/16"*7/8"	12250	600	22	54*27*16
150*1.6*22.23	6"*1/12"*7/8"	10200	200	16	33*36*16
180*1.6*22.23	7"*1/12"*7/8"	8500	200	23	38*25*19
230*1.9*22.23	9"*1/12"*7/8"	6650	100	19	26*24*24



STONE CUTTING DISCS



Stone cutting discs: a versatile alternative to diamond saw blades for effortless cutting of marble, concrete and more. Engineered for efficiency and precision, our product offers unparalleled performance, making stone cutting tasks a breeze. Experience superior results and cost-effectiveness with our innovative solution, revolutionizing the way you work with stone materials.

ACTION LINE



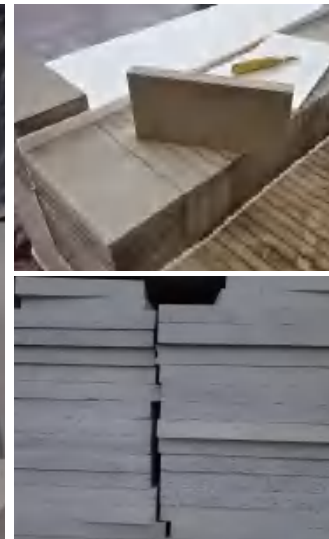
Material:

- Marble
- Limestone
- Artificial stone
- Natural stone
- Concrete
- Titanium

Standard Applications:

- Cement production
- Countertops
- Architecture & Sculpture
- Flooring
- Road base
- Building stone

D x T x H mm	INCH	RPM	PCS/CTN	G.W. kg/CTN	L x W x H cm
115*1.6*22.23	4-1/2"*1/16"*7/8"	13300	500	19	30*24*24
115*3*22.23	4-1/2"*1/8"*7/8"	13300	200	16	38*24*13
125*1.6*22.23	5"*1/16"*7/8"	12250	600	22	54*27*16
125*3*22.23	5"*1/8"*7/8"	12250	200	18	38*27*14
180*1.9*22.23	7"*1/12"*7/8"	8500	200	23	38*25*19
180*3*22.23	7"*1/8"*7/8"	8500	100	19	38*19*19
230*1.9*22.23	9"*1/12"*7/8"	6650	100	19	26*24*24
230*3*22.23	9"*1/8"*7/8"	6650	100	29	48*48*10



The logo for BUDDIES, featuring the word "BUDDIES" in a bold, white, sans-serif font. Above the letters "UDDIES" is a blue arc, and below the letters "DDIES" is an orange arc, forming a partial circle around the text.A circular inset image showing a close-up of a hand in a blue work glove operating a cutting disc. Bright orange sparks are flying from the point of contact between the disc and a metal workpiece. The background is dark, with some distant light sources.

CUTTING DISCS

BUDDIES LINE

Our primary product series, "BUDDIES," shows great skill and top quality, with each formula and technique originating from Germany.

Backed by extensive experience and a commitment to excellence, we offer a diverse range of products tailored to meet a myriad of needs. Our extensive formula system allows for precise customization, ensuring optimal performance across various applications.

With "BUDDIES," expect nothing short of superior quality, reliability, and versatility. Join us on a journey of innovation and reliability as we redefine standards in product excellence.

RAIL TRACK CUTTING DISCS



Rail track cutting disc, leveraging state-of-the-art technology and complemented by ceramic abrasives for extended durability and sharpness. Elevate your operations with a product designed for longevity and precision, ensuring optimal performance and efficiency.

BUDDIES LINE



Material:

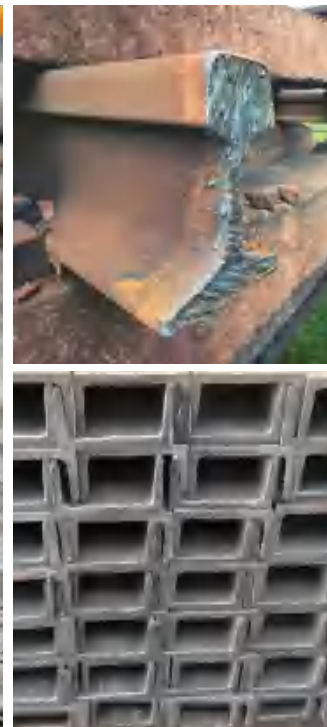
- H-beam & other high-carbon steel

Standard Applications:

- Railway track sector

Tips: Track cutting discs optimized for machines with a minimum of 5.8kW, delivering unparalleled quality and performance.

D x T x H mm	INCH	RPM	PCS/CTN	G.W. kg/CTN	L x W x H cm
355*3.5*25.4	14"*1/8"*1"	5100	10	21	37*37*9.5
355*4*25.4	14"*5/32"*1"	5390	10	24	37*37*9.5





FOUNDRY CUTTING DISCS



Foundry cutting disc series – setting the benchmark in the global foundry industry. Tailored to meet diverse needs including cutting materials, product diameters, machine power, and operator preferences, our range offers unparalleled versatility and precision. Experience the epitome of efficiency and quality with our cutting-edge foundry solutions.



BUDDIES LINE



Material:

- Gray iron
- Ductile iron
- Malleable iron
- Carbon steel castings
- Alloy steel castings
- Non-ferrous metal

Standard Applications:

- Engine components
- Gear parts
- Valves and pumps
- Railway components
- Propellers for ships
- Architectural hardware

D x T x H mm	INCH	RPM	PCS/CTN	G.W. kg/CTN	L x W x H cm
400*3*25.4	16"*1/8"*1"	3850	25	23	42*42*10.2
400*3.2*25.4	16"*1/8"*1"	3850	25	24	42*42*10.2
400*3.5*25.4	16"*1/7"*1"	3850	25	24	42*42*10.2

Tips:

Our product line is meticulously categorized for precise cutting of cast products. Machine power specifications are as follows: 3.5 kW is the minimum standard, 5.5 kW is the entry-level standard, and 7.5 kW qualifies as the standard. The diameter of the workpieces being cut includes thin-walled products, those under 50mm, and those over 50mm. Cutting machines operated by workers range from manual push-type and press-down cutting to semi-automatic and fully automatic machines. Each category has corresponding standard products. Please consult our sales personnel before purchasing to ensure you select the appropriate product.



STAINLESS STEEL/INOX CUTTING DISC



▲ This series of discs designed exclusively for cutting stainless steel. Engineered for precision and durability, our disc offers superior performance, ensuring clean, burr-free cuts and extended tool life. Ideal for demanding applications, this cutting disc stands out in its class for efficiency and reliability. Optimize your stainless steel cutting operations with our top-tier grinding solution.

BUDDIES LINE



Product Advantages:

- Minimal burr formation
- Minimal heat generation
- Subtle scent emission
- Railway track sector
- Long lifetime
- Reduced spark production

D x T x H mm	INCH	RPM	PCS/CTN	G.W. kg/CTN	L x W x H cm
100*1.0*16	4"*3/64"*5/8"	15300	800	18	34*24*24
107*1.2*16	4"*3/64"*5/8"	15300	800	20	34*24*24
100*1.6*16	4"*1/16"*5/8"	15300	800	22	42*24*24
100*2.0*16	4"*1/12"*5/8"	15300	400	16	32*22*22
100*2.5*16	4"*3/32"*5/8"	15300	400	19	32*22*22
100*3.0*16	4"*1/8"*5/8"	15300	400	23	38*22*22
115*1.0*22.23	4-1/2"*3/64"*7/8"	13300	500	15	44*25*13
115*1.6*22.23	4-1/2"*1/16"*7/8"	13300	500	19	30*24*24
115*2.0*22.23	4-1/2"*1/12"*7/8"	13300	400	19	30*24*24
115*2.5*22.23	4-1/2"*3/32"*7/8"	13300	200	15	38*24*13
115*3.0*22.23	4-1/2"*1/8"*7/8"	13300	200	17	38*24*13
125*1.0*22.23	5"*3/64"*7/8"	12250	600	20	50*27*17
125*1.6*22.23	5"*1/16"*7/8"	12250	600	22	30*28*28
125*2.0*22.23	5"*1/12"*7/8"	12250	400	24	30*28*28
125*2.5*22.23	5"*3/32"*7/8"	12250	200	17	38*27*14
125*3.0*22.23	5"*1/8"*7/8"	12250	200	19	38*27*14
150*1.2*22.23	6"*3/64"*7/8"	10200	200	13	31*22*16
150*1.6*22.23	6"*1/16"*7/8"	10200	200	14	31*22*16
150*2.5*22.23	6"*3/32"*7/8"	10200	100	14	31*20*16
150*3.0*22.23	6"*1/8"*7/8"	10200	100	16	31*20*16
180*1.6*22.23	7"*1/16"*7/8"	8500	200	21	40*40*11



D x T x H mm	INCH	RPM	PCS/CTN	G.W. kg/CTN	L x W x H cm
180*1.9*22.23	7"*1/12"*7/8"	8500	200	23	40*40*11
180*2.5*22.23	7"*3/32"*7/8"	8500	100	16	40*40*11
180*3.0*22.23	7"*1/8"*7/8"	8500	100	18	40*40*11
230*1.6*22.23	9"*1/16"*7/8"	6650	100	17	25*25*26
230*1.9*22.23	9"*1/12"*7/8"	6650	100	19	25*25*26
230*2.5*22.23	9"*3/32"*7/8"	6650	100	24	48*48*10
230*3.0*22.23	9"*1/8"*7/8"	6650	100	27	48*48*10
300*2.5*25.4	12"*3/32"*1"	5100	30	15	31*31*10
300*3.0*25.4	12"*1/8"*1"	5100	30	16	31*31*10
300*3.5*25.4	12"*1/8"*1"	5100	30	17	31*31*10
355*2.5*25.4	14"*3/32"*1"	5500	25	16	37*37*10
355*3.0*25.4	14"*1/8"*1"	5500	25	18	37*37*10
355*3.5*25.4	14"*1/8"*1"	5500	25	20	37*37*10
400*3.0*25.4	16"*1/8"*1"	3850	25	22	42*42*10
400*3.5*25.4	16"*1/8"*1"	3850	25	24	42*42*10



CARBON STEEL/METAL CUTTING DISCS



▲ This series of discs engineered for accurate and clean cuts, ensuring efficient shaping of carbon steel materials. Crafted with high-quality resin materials, these cutting discs deliver exceptional longevity, minimizing downtime and replacement costs. Designed to maintain consistent cutting performance over time, providing reliable results with every use.

BUDDIES LINE



Product Advantages:

- Extended lifespan
- Low development of burrs
- Cool cutting
- Few sparks
- Low odor
- High cutting speed

D x T x H mm	INCH	RPM	PCS/CTN	G.W. kg/CTN	L x W x H cm
100*1.0*16	4"*3/64"*5/8"	15300	800	18	34*24*24
107*1.2*16	4"*3/64"*5/8"	15300	800	20	34*24*24
100*1.6*16	4"*1/16"*5/8"	15300	800	22	42*24*24
100*2.0*16	4"*1/12"*5/8"	15300	400	16	32*22*22
100*2.5*16	4"*3/32"*5/8"	15300	400	19	32*22*22
100*3.0*16	4"*1/8"*5/8"	15300	400	23	38*22*22
115*1.0*22.23	4-1/2"*3/64"*7/8"	13300	500	15	44*25*13
115*1.6*22.23	4-1/2"*1/16"*7/8"	13300	500	19	30*24*24
115*2.0*22.23	4-1/2"*1/12"*7/8"	13300	400	19	30*24*24
115*2.5*22.23	4-1/2"*3/32"*7/8"	13300	200	15	38*24*13
115*3.0*22.23	4-1/2"*1/8"*7/8"	13300	200	17	38*24*13
125*1.0*22.23	5"*3/64"*7/8"	12250	600	20	50*27*17
125*1.6*22.23	5"*1/16"*7/8"	12250	600	22	30*28*28
125*2.0*22.23	5"*1/12"*7/8"	12250	400	24	30*28*28
125*2.5*22.23	5"*3/32"*7/8"	12250	200	17	38*27*14
125*3.0*22.23	5"*1/8"*7/8"	12250	200	19	38*27*14
150*1.2*22.23	6"*3/64"*7/8"	10200	200	13	31*22*16
150*1.6*22.23	6"*1/16"*7/8"	10200	200	14	31*22*16
150*2.5*22.23	6"*3/32"*7/8"	10200	100	14	31*20*16
150*3.0*22.23	6"*1/8"*7/8"	10200	100	16	31*20*16



D x T x H mm	INCH	RPM	PCS/CTN	G.W. kg/CTN	L x W x H cm
180*1.6*22.23	7"*1/16"*7/8"	8500	200	21	40*40*11
180*1.9*22.23	7"*1/12"*7/8"	8500	200	23	40*40*11
180*2.5*22.23	7"*3/32"*7/8"	8500	100	16	40*40*11
180*3.0*22.23	7"*1/8"*7/8"	8500	100	18	40*40*11
230*1.6*22.23	9"*1/16"*7/8"	6650	100	17	25*25*26
230*1.9*22.23	9"*1/12"*7/8"	6650	100	19	25*25*26
230*2.5*22.23	9"*3/32"*7/8"	6650	100	24	48*48*10
230*3.0*22.23	9"*1/8"*7/8"	6650	100	27	48*48*10
300*2.5*25.4	12"*3/32"*1"	5100	30	15	31*31*10
300*3.0*25.4	12"*1/8"*1"	5100	30	16	31*31*10
300*3.5*25.4	12"*1/8"*1"	5100	30	17	31*31*10
355*2.5*25.4	14"*3/32"*1"	5500	25	16	37*37*10
355*3.0*25.4	14"*1/8"*1"	5500	25	18	37*37*10
355*3.5*25.4	14"*1/8"*1"	5500	25	20	37*37*10
400*3.0*25.4	16"*1/8"*1"	3850	25	22	42*42*10
400*3.5*25.4	16"*1/8"*1"	3850	25	24	42*42*10

